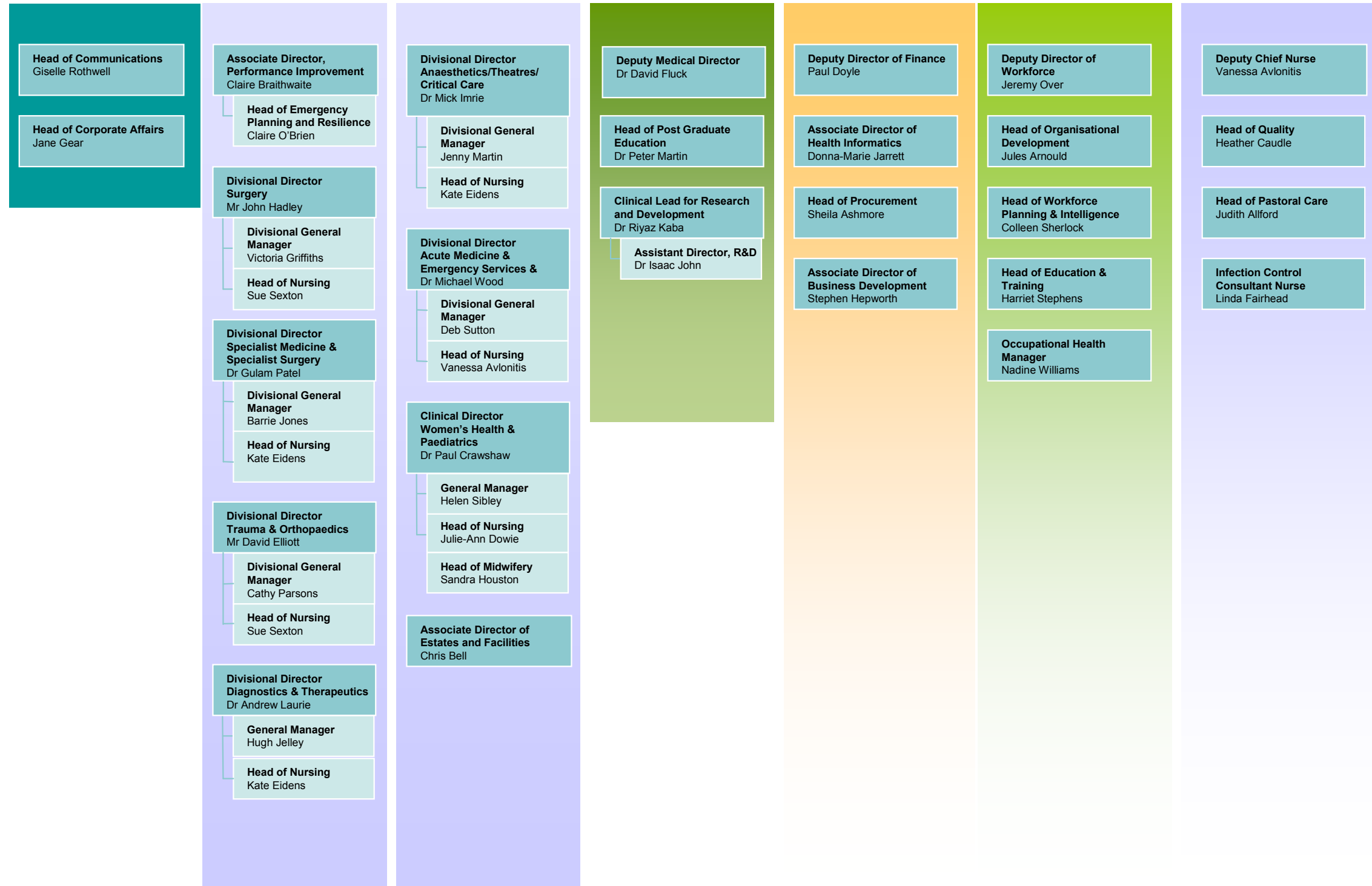


# Organisation Chart

<b>Chairman</b> Aileen McLeish	<b>Non-Executive</b> Prof. Philip Beesley	<b>Non-Executive</b> Sue Ellis	<b>Non-Executive</b> Terry Price	<b>Non-Executive</b> Peter Taylor	<b>Non-Executive</b> Jim Gollan	<b>Non-Executive</b> Clive Goodwin
<b>Chief Executive</b> Andrew Liles	<b>Deputy Chief Executive</b> Valerie Bartlett	<b>Medical Director</b> Dr Mike Baxter	<b>Director of Finance and Information</b> John Headley	<b>Director of Workforce and Org. Development</b> Raj Bhamber	<b>Chief Nurse</b> Suzanne Rankin	

Trust Board



January 2012