



We can provide interpreters for a variety of languages, information in larger print or other formats (e.g. audio) - please call us on 01932 723553.

اگر نیاز به ترجمہ دارید، لطفاً با شماره 01932 723553 تماس بگیرید۔

जे उगाठु उरनमे दी लेउ वै उं विरधा वरवे दिस नंघर उे देन वरवे: 01932 723553

اگر آپ اس کا اردو زبان میں ترجمہ چاہتے ہیں، تو براہ کرم اس فون نمبر 01932 723553 پر رابطہ کریں

Se precisa de uma tradução por favor contacte: 01932 723553

আপনার অনুবাদের দরকার হলে এখানে যোগাযোগ করুন : 01932 723553

यदि आपको अनुवाद की ज़रूरत है तो कृपया इस नंबर पर फोन करें: 01932 723553

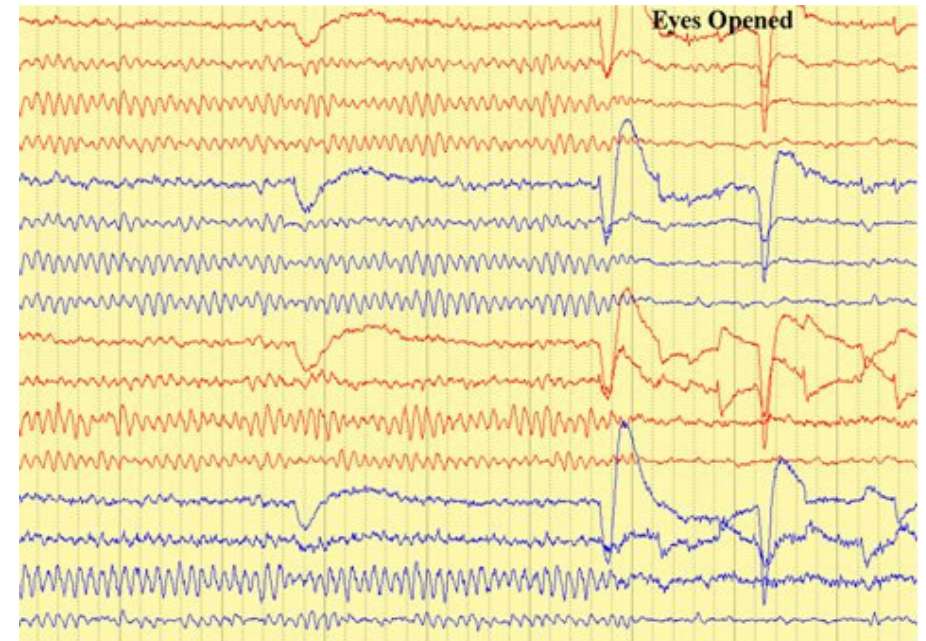
Jeżeli chcemy, aby te informacje w innym języku, proszę zadzwonić 01932 723553

St. Peter's Hospital
Guildford Road
Chertsey, Surrey
KT16 0PZ.
Tel: **01932 872000**

Website: www.ashfordstpeters.nhs.uk/clinical-neurophysiology

EEG (Adult Patients)

At St Peter's Hospital, Chertsey



Having an EEG

An introduction for Patients aged 16 and over

What is an EEG?

EEG stands for Electroencephalogram, a recording of the electrical signals produced by the brain. In the media it is sometimes referred to as recording brainwaves.

The EEG gives information about the brain that is useful to your doctor in making a diagnosis in several different conditions. It is the only test that can produce this sort of information, but your doctor may also want to get information from other tests.

About our Department

West Surrey Clinical Neurophysiology is a specialist department, one of only a few in the country. We are based at **St Peter's Hospital in Chertsey** but we provide our services to patients from several other hospitals too.

Please make sure you come to the right hospital!

Contacting us

If you have any questions before your appointment please contact us and we will try our best to answer them.

You can phone us on 01932 722543. We are open from 9am to 5 pm. There is also an answering machine outside these hours or if we are unable to take your call.

Our postal address is:

West Surrey Clinical Neurophysiology
St Peter's Hospital
Guildford Road
Chertsey
KT16 0PZ

Further Information

We aim to provide an excellent service at all times, but should you have any concerns please, in the first instance, raise these with our staff or the Manager on duty. If they cannot resolve your concern, please contact our Patient Advice and Liaison Service (PALS) on 01932 723553 or email pals@asph.nhs.uk. If you still remain concerned please contact our Complaints Manager on 01932 722612 or email complaints@asph.nhs.uk

Author: Fowle / Crighton

Version: 1.1

Department: West Surrey Clinical Neurophysiology

Published: 15/8/2011

Review: August 2012

What happens next

Your EEG recording is reported at a later time by both the clinical physiologist, who gives a technical report which involves measuring all the different waveforms recorded, and the medical consultant who gives a clinical report.

This report is sent to your hospital consultant. He or she will give you the result of the EEG test at a later date.

We also send a copy to your GP.

We aim to prepare these reports in good time.

Preparing for the EEG

Unless we ask you to change, please carry on taking all your usual medication as recommended by your doctor. Please bring a list of your medications with you.

You can eat as normal, including meals on the day of the test.

You should have a normal night's sleep before the test.

We can only do the test if your hair is clean and dry; therefore do not use any hair styling products (gel, wax, mousse, hair lacquer)

Arriving at St Peter's Hospital

If you are unable to attend on the day of the test, please do let us know, using the contact details at the end of this booklet.

The department is in the old part of the hospital called "The Ramp", opposite the A and E department. The nearest car parks are numbers 4 (A & E / Rowley Bristow) and 5 (Hazel), both of which have entrances onto The Ramp right outside our department. If these are full, use the main car parks outside outpatients or the Abbey Wing and follow directions to "The Ramp" and our department. It may be helpful to bring this booklet with you to show people if asking directions. The signs in the hospital say "Clinical Neurophysiology" or "EEG and EMG". Please note St. Peters Hospital operates payment parking systems. Further details are available online at www.ashfordstpeters.nhs.uk/for-patients/getting-here.

The entrance is at the side of the building. Please ring the bell and register with our receptionist. It is helpful if you can arrive about 10 – 15 mins before the appointment time shown on the accompanying letter. We have only limited space in our waiting room, if you arrive earlier at the hospital you will be asked to wait elsewhere. There is a café at the main outpatient entrance. We aim to keep to our appointment times, but if we are running late we shall let you know and we ask for your patience.

What happens during the EEG

Your test will be carried out by a clinical physiologist, who will meet you in our waiting room and take you to the recording room. We shall explain the test to you and this is a good time to ask any questions you still have. The clinical physiologist will also ask you about your particular problem and about your health in general. He or she will also ask you to sign a consent form.

The clinical physiologist will measure your head and make marks with a skin pen. At each mark, he or she will rub the skin and then attach a small metal disc through which the recording is made. It is held in place with a sticky paste.

The investigation is painless and in most cases you will be lying down for the recording and will be asked to follow instructions, such as to close and open your eyes. No needles or electricity are used and we only record the signals which are produced naturally by your brain.

In most cases we use 'activation procedures' to improve the recording, including overbreathing and photic stimulation. The clinical physiologist will explain these to you and ask for your consent at the start of the test.

Sedation for Sleep EEG

In some cases it is useful to record the EEG whilst you sleep. We make this decision with the doctor who refers you. We shall give you tablets of a drug called melatonin to help you sleep. This is a naturally occurring drug that alters your body clock so that you sleep gently for a short period. It is unlike other sleeping tablets that “knock you out” and you should have no after effects. However if we need to do this part of the test **you will need to be accompanied as you will not be allowed to drive home afterwards.**

If we need to do this part of the test it will say so on the appointment letter – your letter will say “Routine and Sleep EEG”. Otherwise the letter will just say “Routine EEG”.

Consent

The clinical physiologist will ask you to sign a consent form for the following two parts of the test.

Video recording - this is a useful tool in helping the medical consultant report on the EEG recording. The video is time locked to the recording, which means that the consultant can at anytime play the video and see exactly what the patient is doing. This allows for a more detailed report which can be useful for some conditions.

Photic stimulation – this part of the test involves a flashing light, similar to a strobe light. This part of the test can be diagnostic for specific types of epilepsy. In a very small number of people there is a very slight risk of this triggering an event. If this happened there is a risk that you might lose your driving licence – you would have to discuss this with the doctor who referred you for the test. This is not the aim of the procedure and we take all possible steps to stop this happening.

We will discuss both of these areas further with you at the time of your appointment and the clinical physiologist will try to answer any questions you may have.

What happens after the recording

After the recording the small discs will be painlessly removed and the paste dissolved by rubbing the area with clean warm water.

Your hair will still feel quite sticky afterwards

There are no after effects from the EEG recording, which will take around one hour and you can leave immediately afterwards. A sleep EEG takes a little longer, about one and a half hours, but you can still go home afterwards.